

INTRODUZIONE

Dalla presente brochure, si potrà prendere visione di alcuni lavori svolti dalla 3A Engineering.

Con le sue competenze, sviluppate nel corso degli anni, la società è presente, principalmente, nei seguenti settori:

- Industriale
- Civile
- Servizi
- Impianti speciali



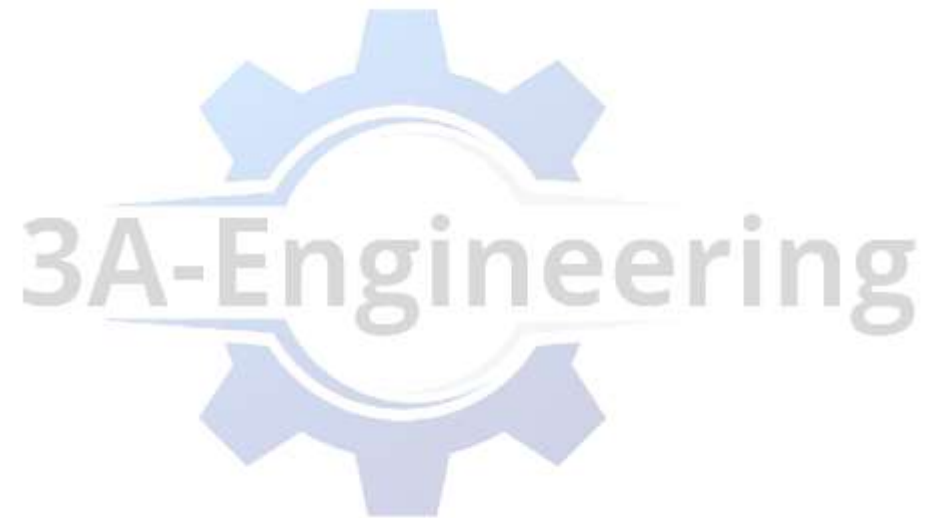


INTRODUZIONE

1

ALCUNI ESEMPI

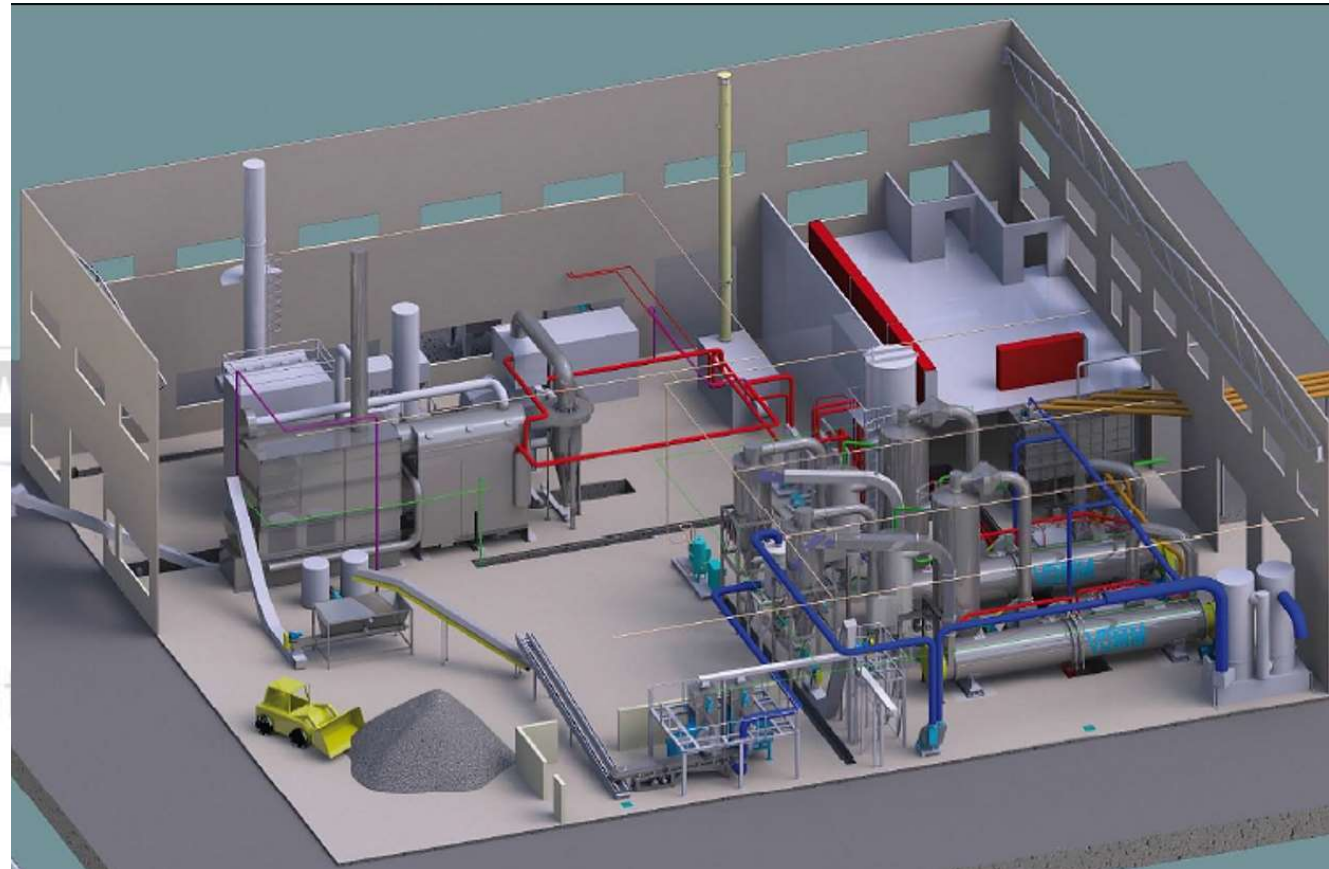
4




Progettazione Impianti Industriali

ALCUNI ESEMPI

- Cliente/Ubicazione: Yara
- Tipo: Turbo Dryer system plant
- Lavoro: Piping routing, stress analysis and piping supports
- Software: Cadworx & Caesar

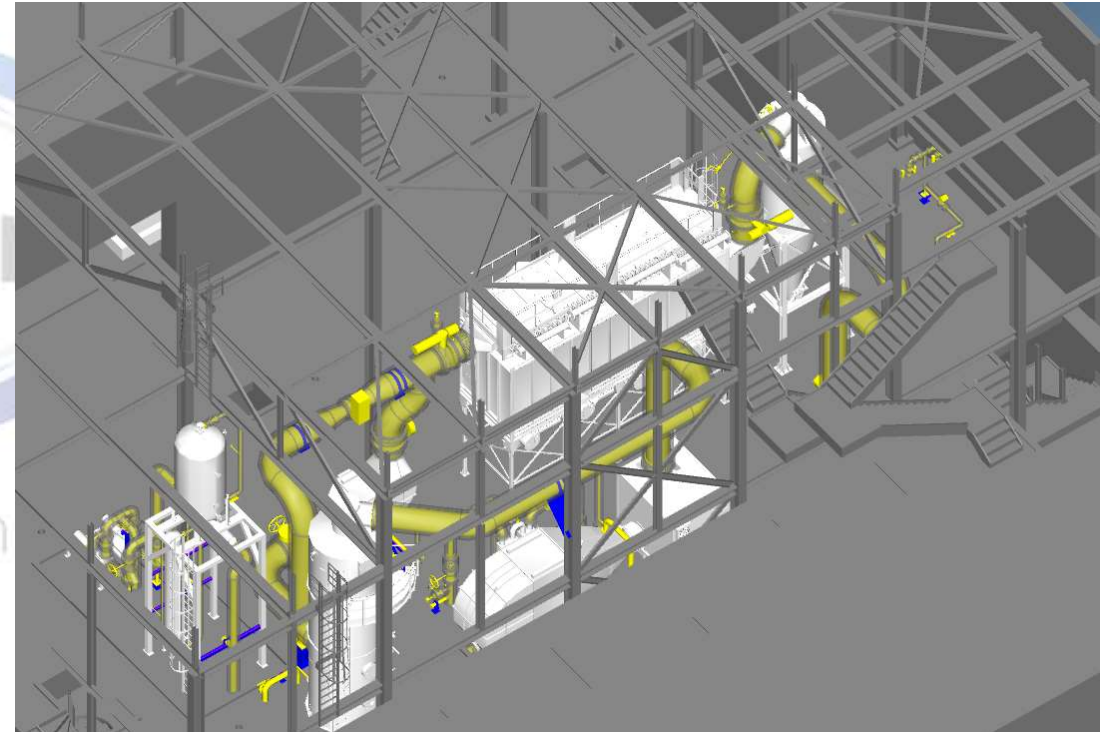
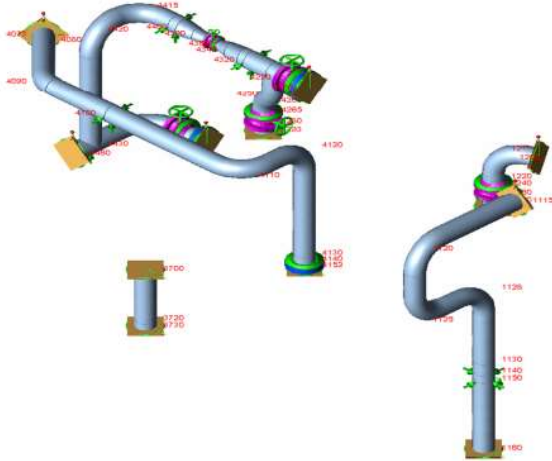


	PIPING STRESS REPORT
DOC. NUMBER	580-STR-001

RESULT SUMMARY

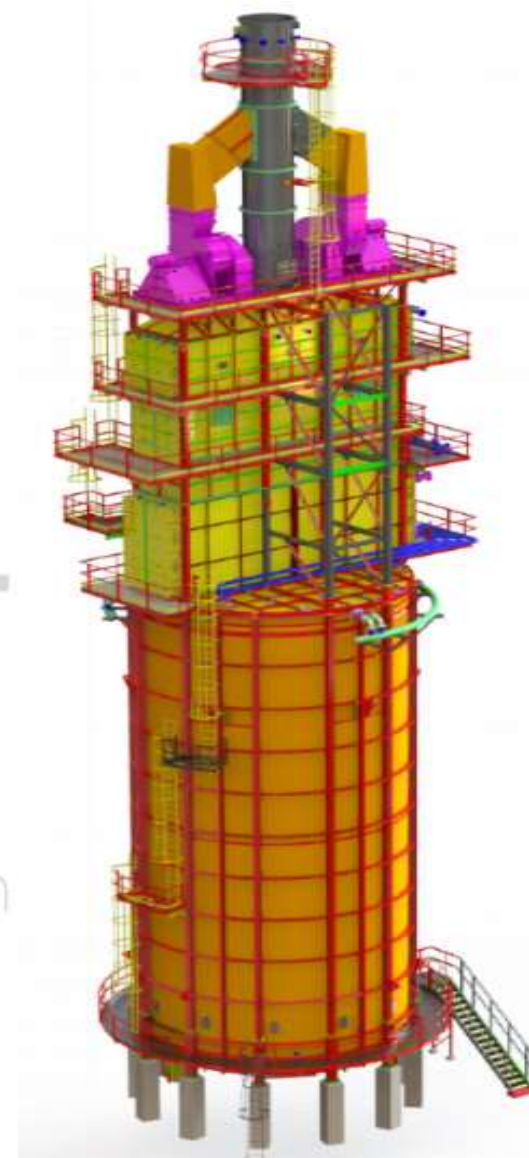
iii Overall System Isometric for Process Air

LINE NUMBER:
KSV-09001-V01-700
KSV-09002-V01-700
VV-09001-V01-700
VV-09004-V01-700
VV-09005-V01-700
VV-09006-V01-700
VV-09007-V01-700



Progettazione Im

- Cliente/Ubicazione: Wood
- Tipo: STRIPPER REBOILER HEATER UOP-ERBIL IRAQ
- Lavoro:
 - n° 7 forni cilindrici
 - n° 2 convettive (complete di h.box e ETS)
 - n°4 camini
 - n°2 condotti fumi
 - n° 35 (circa) passerelle circolari parte radianti e parte camini
 - n° 2 strutture di supporto camino
 - strutture ausiliare in genere
 - Ladders e rampe scale
 - n° 7 damper
 - layout grigliati



- Fornitura:
 - Calcolo strutturale secondo **AISC LRFD Method**
 - Normalini:
 - file dxf del piastrame con l'ausilio del software
 - file dstv dei profili
 - distinte materiale
 - disegni di assemblaggio
 - layout grigliati di piani, passerelle e pianerottoli
 - disegni di montaggio completi con bulloni
 - disposizione ancoraggi refrattario per radiante e convettiva
- Software: Tekla Structure

The following figures shows the maximum values of Von Mises stresses on the plate (thk=25 mm) for the maximum tension on bolts. The figure represents the results of a static analysis of a local F.E.M. model (performed with SAP2000), representative of the most stressed portions of the plate between the stiffening plates.

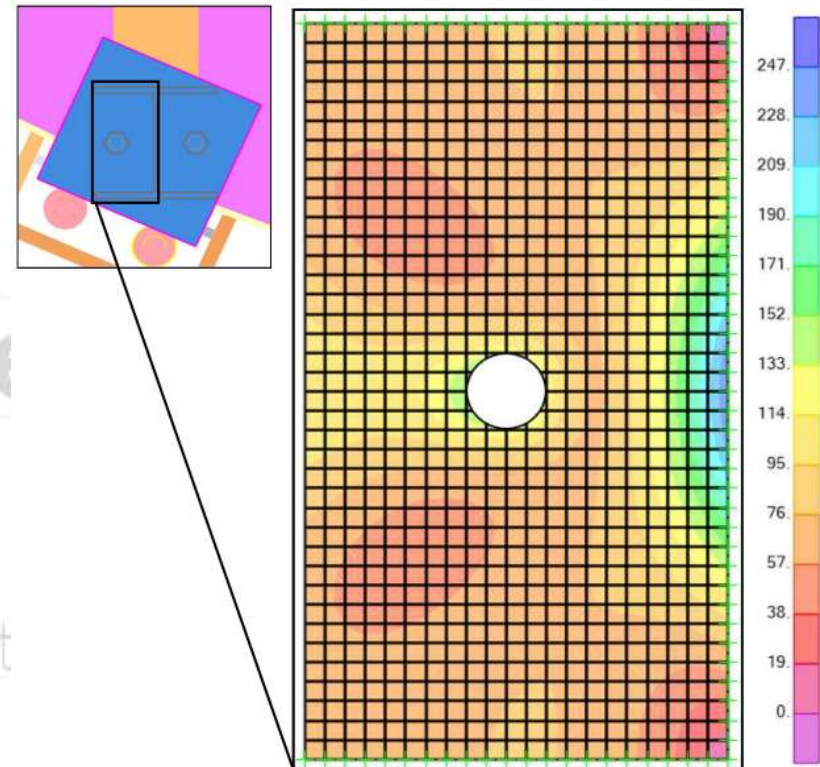
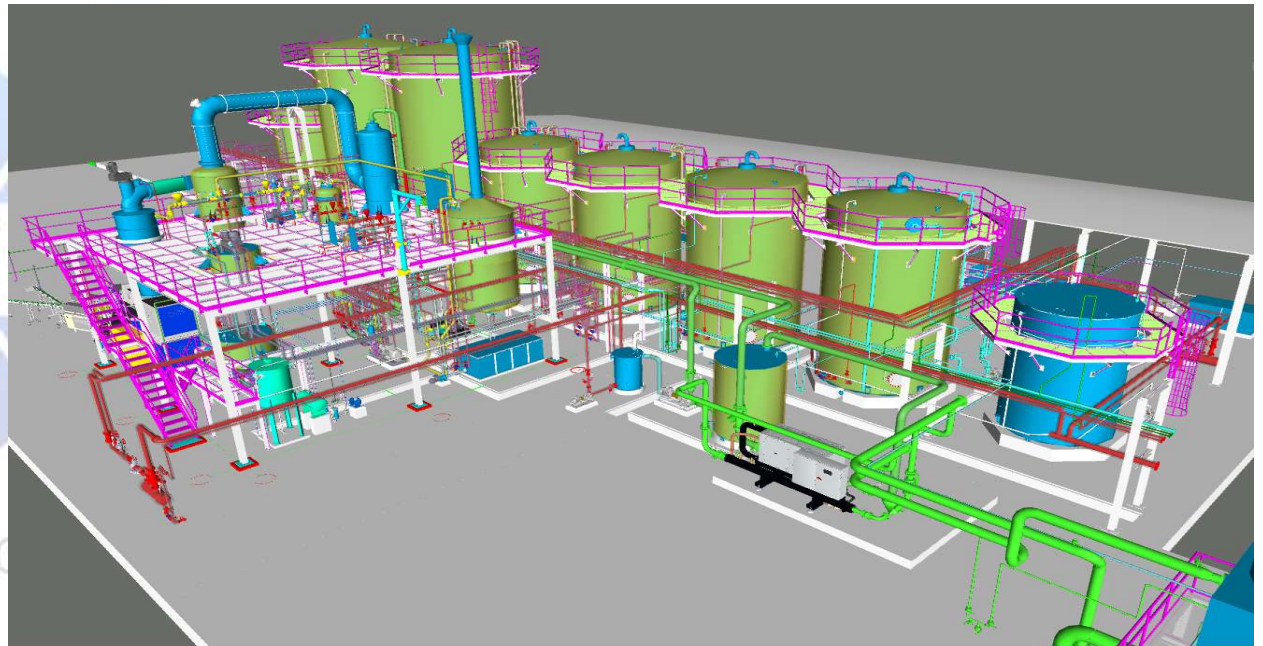
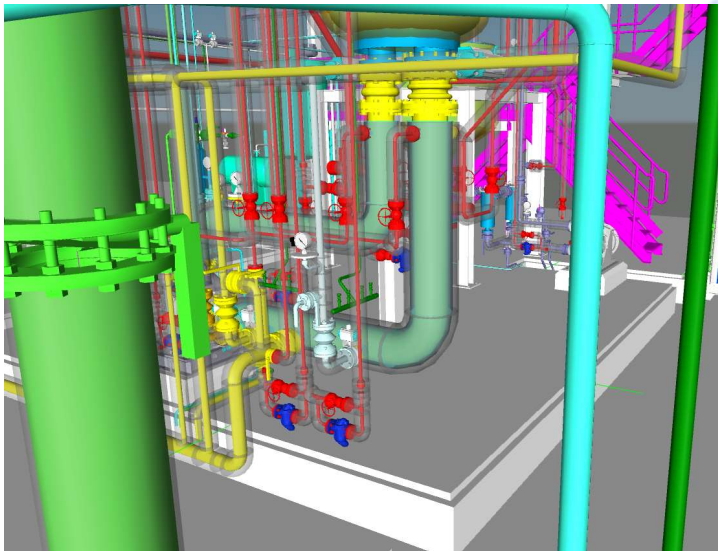
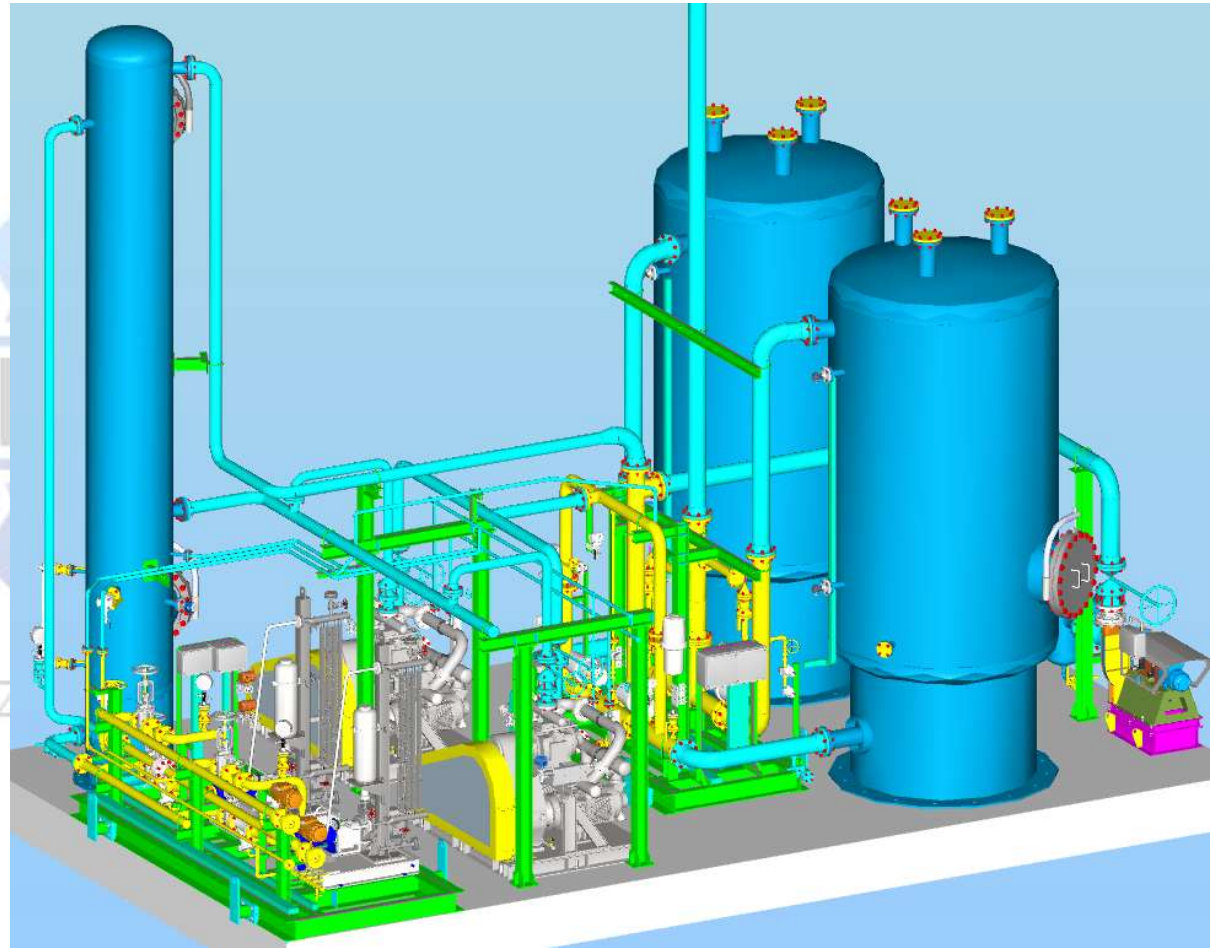


Fig. 10 - $\max \sigma_{VM} = 200 \text{ N/mm}^2 < 0.9 \times 275 = 247.5 \text{ N/mm}^2$

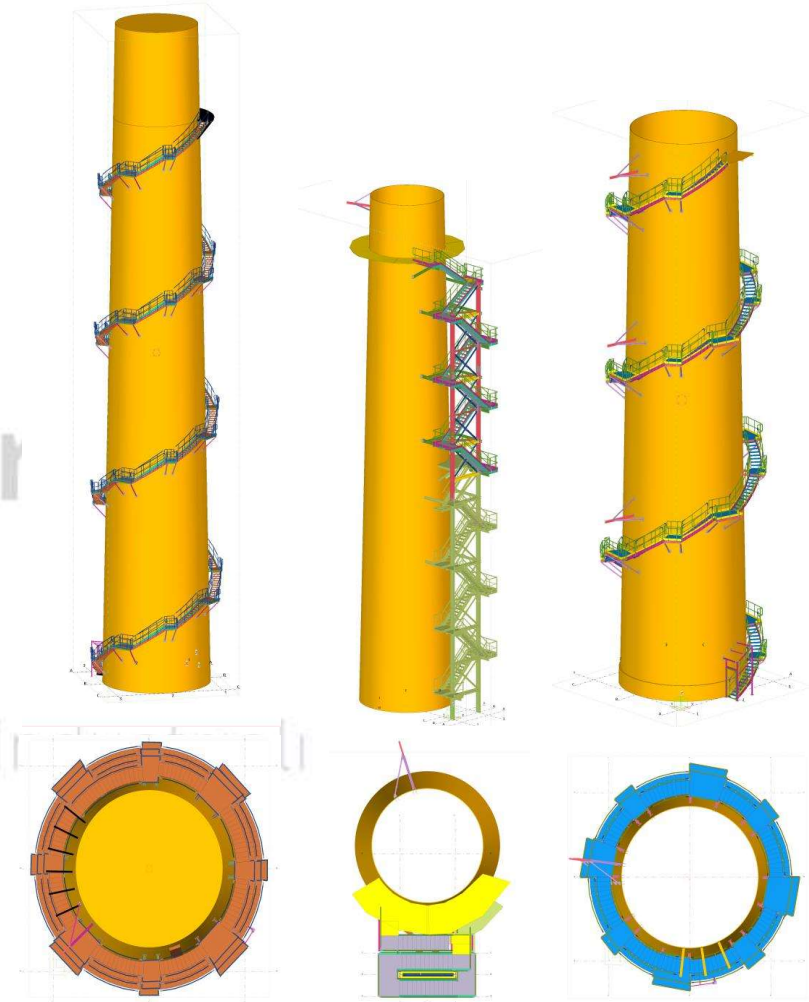
- Cliente/Ubicazione: SRS MIDDLE EAST FZE VAPOR RECOVERY SYSTEMS PLANT
- Fornitura: Piping routing, stress analysis and piping supports
- Software: Cadworx & Caesar



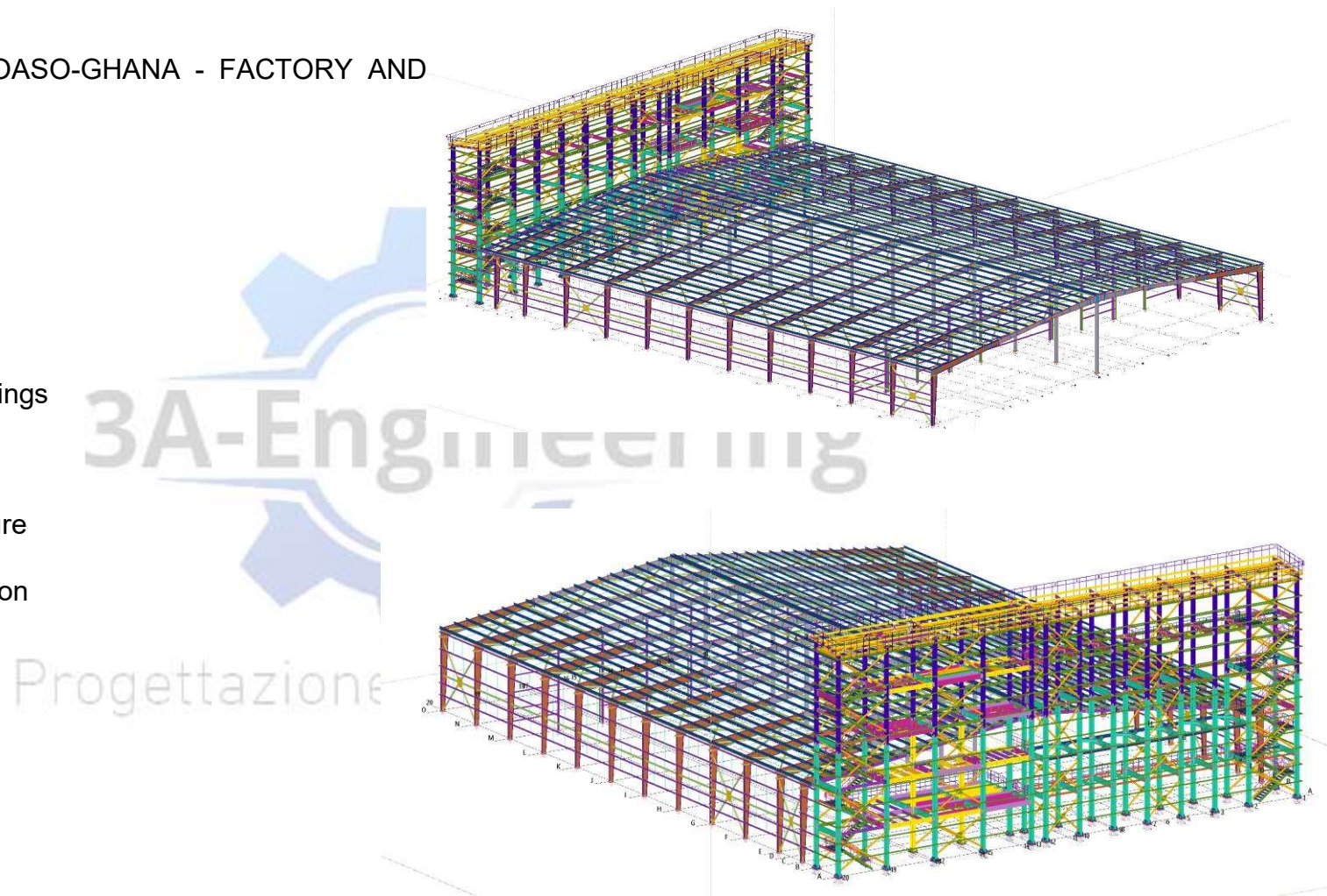
- Cliente/Ubicazione: SRS MIDDLE EAST FZE CARBON BED SKID
- Fornitura: Piping routing, stress analysis and piping supports
- Software: Cadworx & Caesar



- Cliente/Ubicazione: HATAY-TURKEY ERDEMIR IRON AND STEEL FACTORY-SPIRAL CHIMNEY STAIR
- Fornitura:
 - 3D Modeling
 - Shop drawings
 - Installation drawings
 - Detailed layout
- Software: Tekla Structure
- Structure Weight: 32 ton

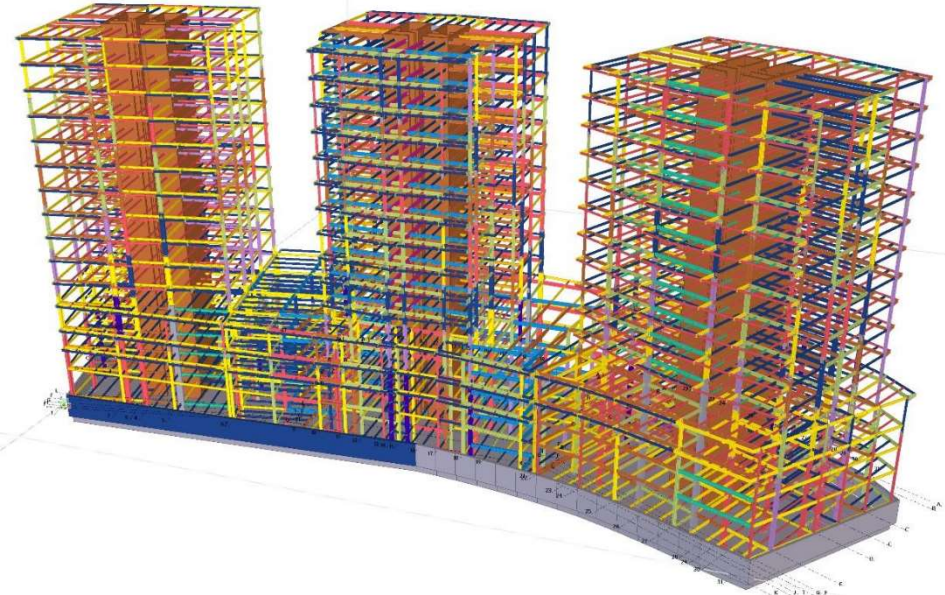


- Cliente/Ubicazione: GOASO-GHANA - FACTORY AND WAREHOUSE
- Fornitura:
 - 3D Modeling
 - Shop drawings
 - Installation drawings
 - Detailed layout
- Software: Tekla Structure
- Structure Weight: 331 ton



Cliente/Ubicazione: İSKENDERUN/HATAY - MALL+PARKING+12 STORY RESIDANCE

- Fornitura:
 - 3D Modeling
 - Shop drawings
 - Installation drawings
 - Detailed layout
- Software: Tekla Structure
- Structure Weight: 2120 ton



- Cliente/Ubicazione: TASHKENT-UZBEKISTAN

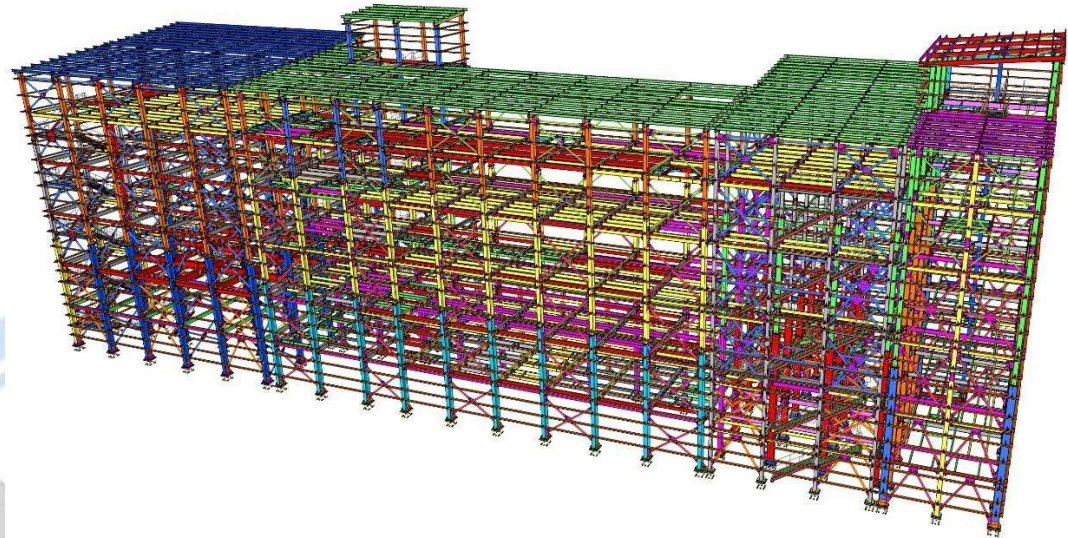
600T/day FLOUR MILL BUILDING

- Fornitura:

- 3D Modeling
- Shop drawings
- Installation drawings
- Detailed layout

- Software: Tekla Structure

- Structure Weight: 820 ton



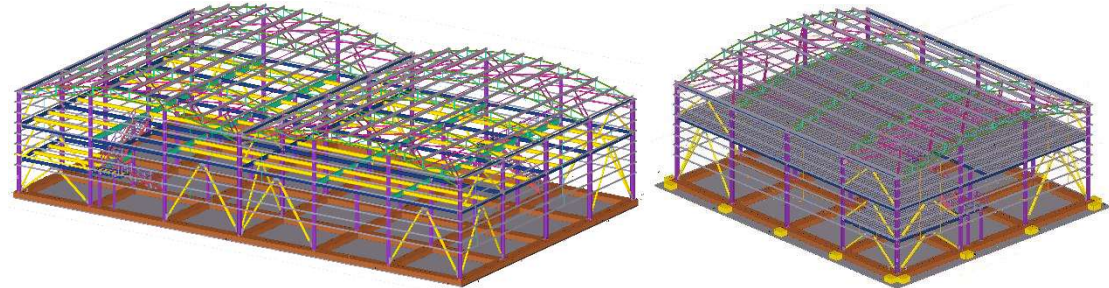
- Cliente/Ubicazione: HATAY/TURKEY
- 6 TYPES-96 SHOWROOM

- Fornitura:

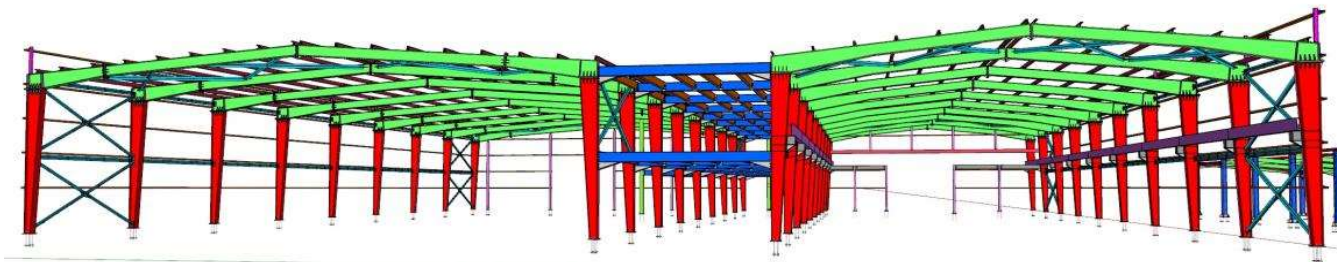
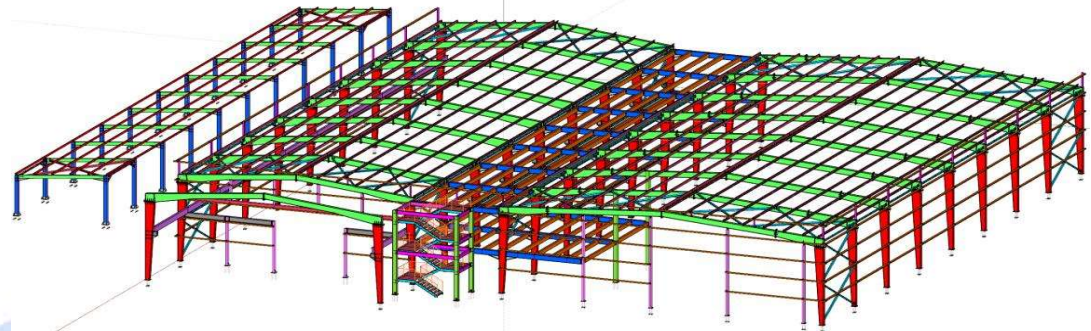
- 3D Modeling
- Shop drawings
- Installation drawings
- Detailed layout

- Software: Tekla Structure

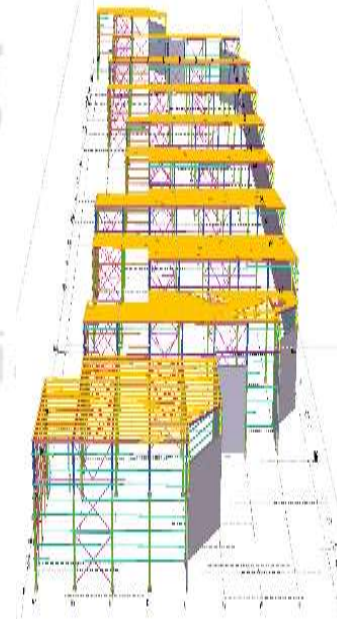
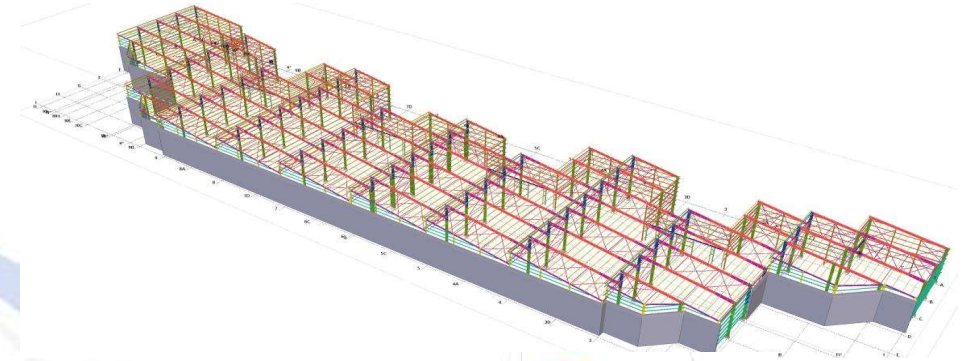
- Structure Weight: 2242 ton



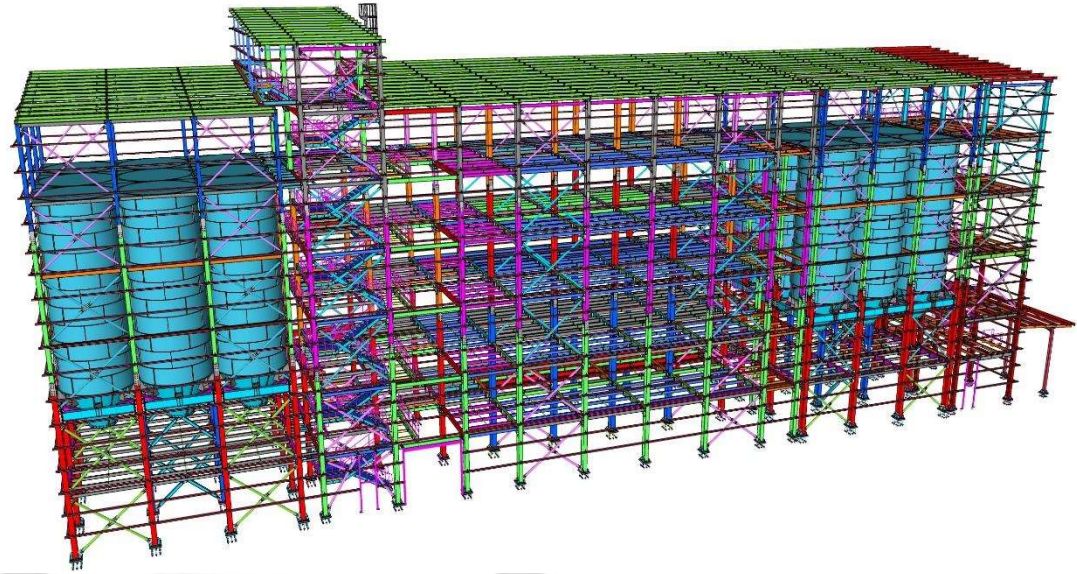
- Cliente/Ubicazione: AL-WAKRAH / QATAR Q-FAB MANUFACTURING FACILITIES
- Fornitura:
 - 3D Modeling
 - Shop drawings
 - Installation drawings
 - Detailed layout
- Software: Tekla Structure
- Structure Weight: 318 ton



- Cliente/Ubicazione: DOHA / QATAR - UM ALHOUL ECONOMIC ZONE-MANATEQ-6 WAREHOUSE
- Fornitura:
 - 3D Modeling
 - Shop drawings
 - Installation drawings
 - Detailed layout
- Software: Tekla Structure - Structure Weight: 412 ton

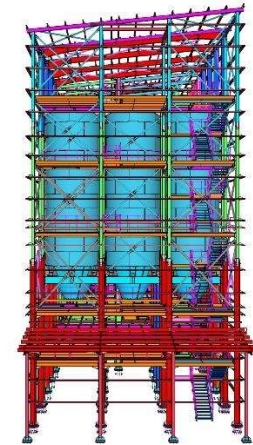
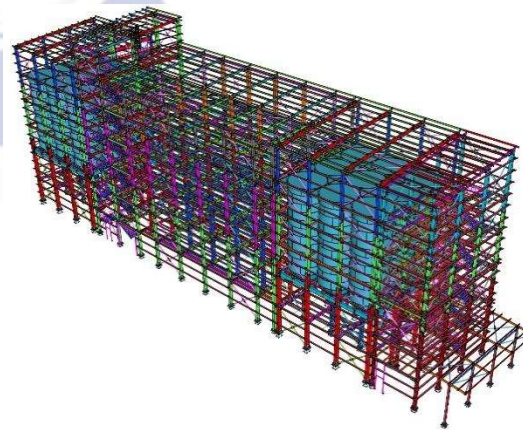


- Cliente/Ubicazione: SOMALILAND - 400T/days
NATIONAL FLOUR MILL BUILDING
- Fornitura:
 - 3D Modeling
 - Shop drawings
 - Installation drawings
 - Detailed layout
- Software: Tekla Structure
- Structure Weight: 580 ton

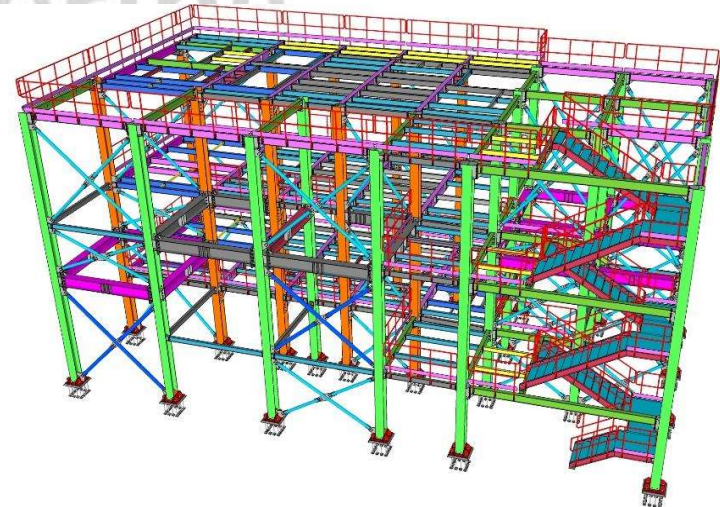
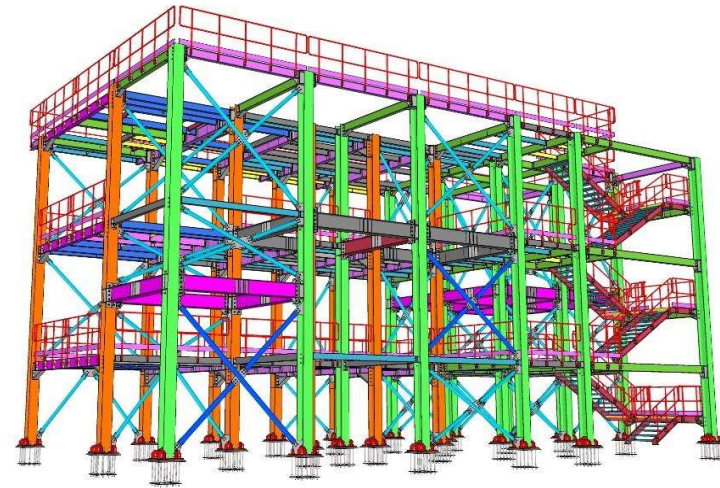


3A-En

Progettazione I



- Cliente/Ubicazione: MAPUTO-MOZAMBIQUE - 70T/day MAIZE MILL B
- Fornitura:
 - 3D Modeling
 - Shop drawings
 - Installation drawings
 - Detailed layout
- Software: Tekla Structure - Structure Weight: 72 ton



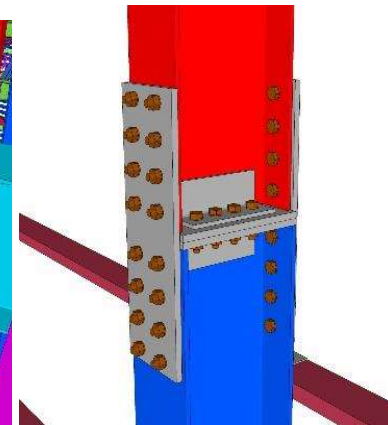
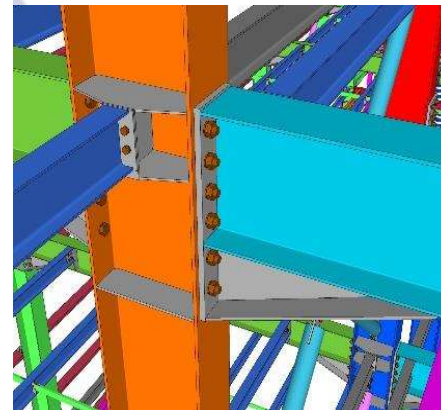
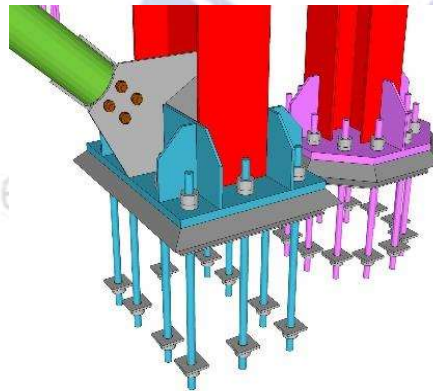
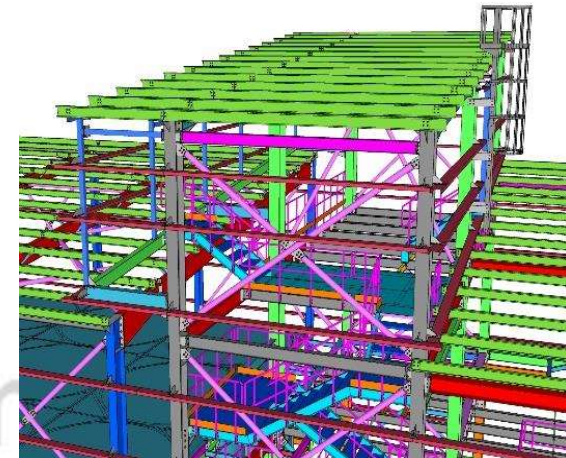
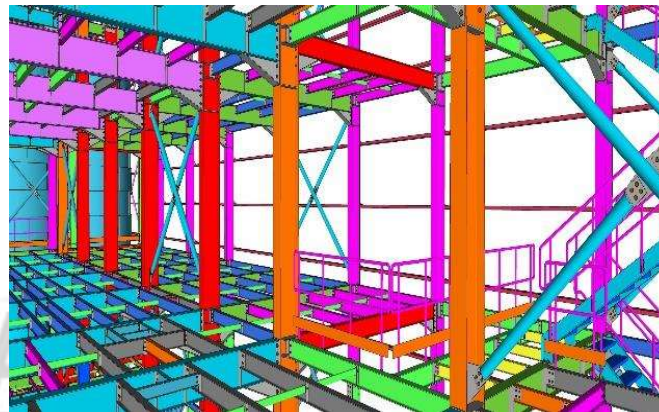
- Cliente/Ubicazione: HARARE-ZIMBABWE - 500T/day FLOUR MILL INSTALLATION DRAWINGS

- Fornitura:

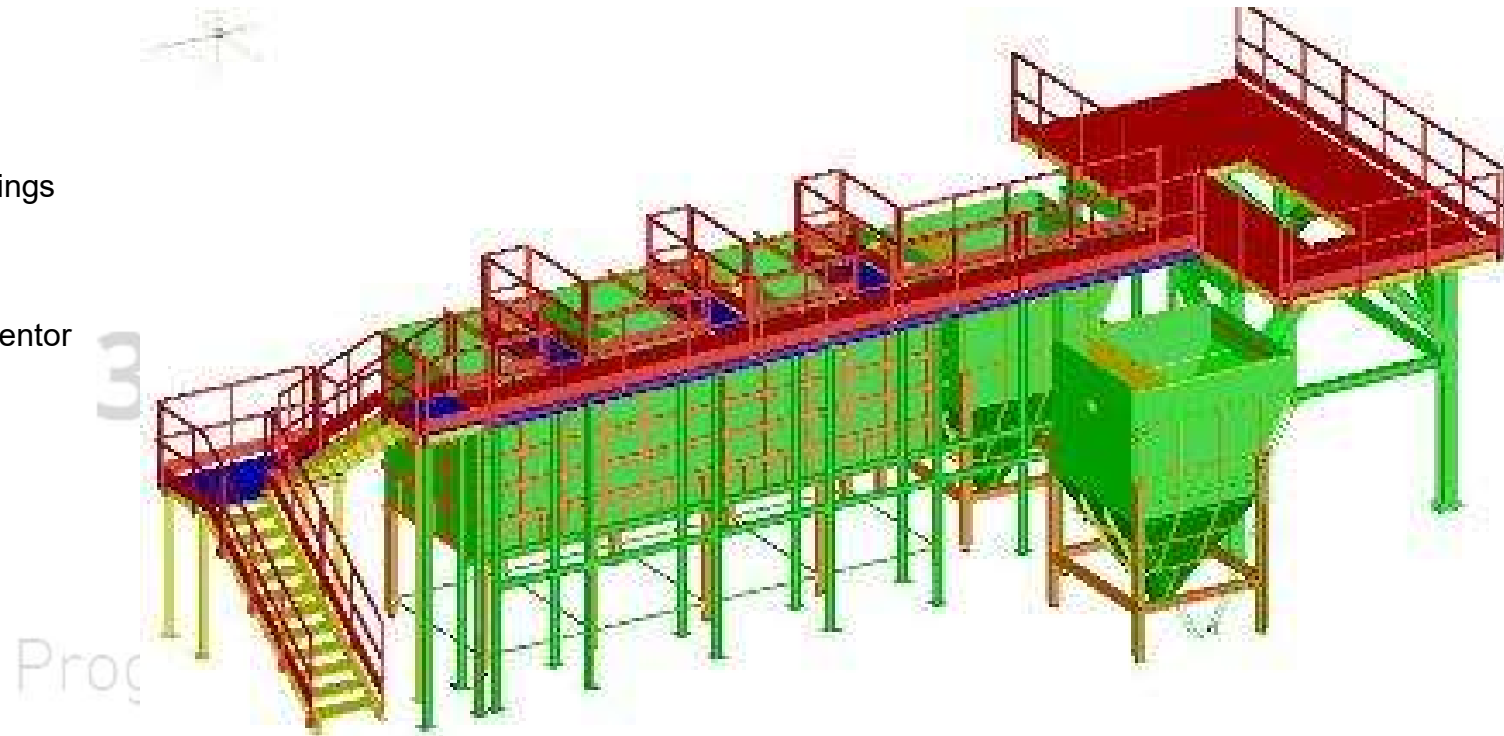
- 3D Modeling
- Shop drawings
- Installation drawings
- Detailed layout

- Software: Tekla Structure

- Structure Weight: 680 ton



- Cliente/Ubicazione: South Africa
- Fornitura:
 - 3D Modeling
 - Shop drawings
 - Installation drawings
 - Detailed layout
- Software: Autodesk Inventor



- Cliente/Ubicazione:

Hamon Research - Cottrell GmbH

Song Hau 1 Thermal Power Plant 2 X 600mw

- Fornitura:

- 3D Modeling
- Shop drawings
- Installation drawings
- Detailed layout

